

FORD RESET TOOL E-13

The E-13 tool designed for unlocking the Ford Traffic 3000,4000,5000,6000 and 7000 model radio/cassettes even when the radio is displaying "LOCKED 10" or "LOCKED 13" message.

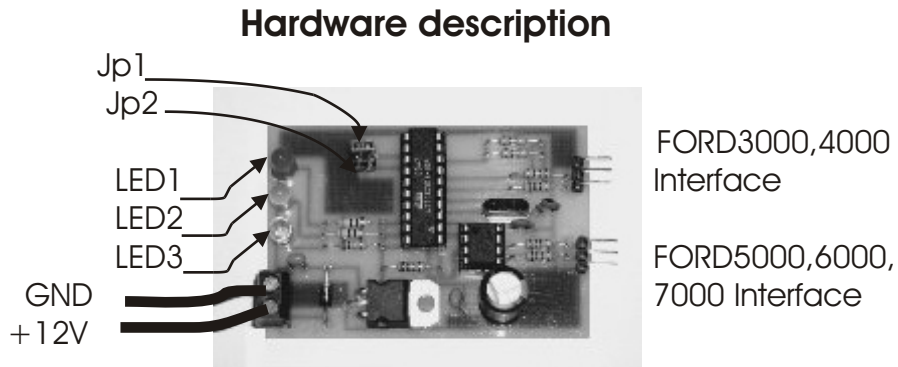


Figure 1-1

The E-13 Ford Reset tool includes 3 LEDs, power supply connector and two 2-wire Interfaces for car radio connections. The E-13 can be connected to FORD Traffic car radio with 3-wire cable to the I/O port headers

Description of LEDs: LED1 (Red colour) - ERROR led
LED2 (Green colour) - ACTIVITY led.
LED3 (Yellow colour) - POWER led

Description of jumpers: Jp1 - FORD3000, 4000 position
Jp2 - FORD5000, 6000, 7000 position

Jumpers settings correct:



Figure 1-2

Description of nterfaces:

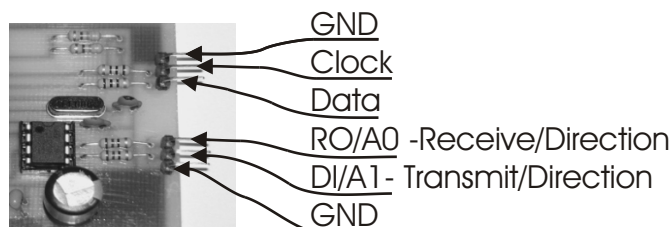


Figure 1-3

NOTE: Incorrect jumper settings or hardware errors indicated via LED1 (flashing)

ATTENTION!: ONCE UNLOCKED, the radio will permit a further 13 attempts for code entering, but when second 13_th attempts is used the radio will display "LOCK FOREVER" and can never be unlocked next time

Installing

FORD3000,4000 (1995-1998) :

- Set Jumper to Jp1 Ford3000, 4000 position (see Figure 1-2)
- Connect the E-13 to car radio according with Figure 2
- Switch ON the power to car radio
- When you should see a message "LOCKED 10" or "LOCKED 13" turn ON the power E-13 tool. As soon as the process is completed, the radio will respond and displaying "CODE" message indicating that the security code number can now be entered.
- Switch OFF the power of car radio.
- Disconnect the E-13 interface wires from car radio.
- Switch ON the power to car radio again and enter the code number.

NOTE: Connect the E-13 and the radio to the same power supply source according with correct polarity (The E-13 is protected against reverse polarity)

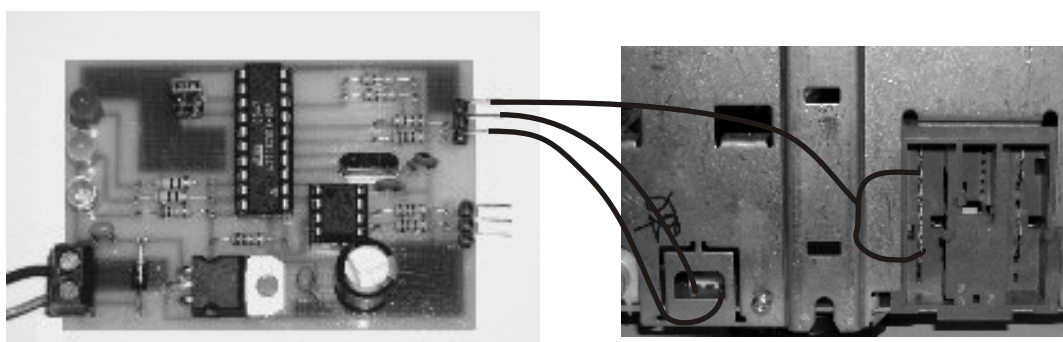


Figure 2

FORD3000,4000 (1998-2001) :

- Set Jumper to Jp1 Ford3000, 4000 position (see Figure 1-2)
- Connect the E-13 to car radio according with Figure 3
- Switch ON the power to car radio
- When you should see a message "LOCKED 10" or "LOCKED 13" turn ON the power E-13 tool. As soon as the process is completed, the radio will respond and displaying "CODE" message indicating that the security code number can now be entered.
- Switch OFF the power of car radio.
- Disconnect the E-13 interface wires from car radio.
- Switch ON the power to car radio again and enter the code number.



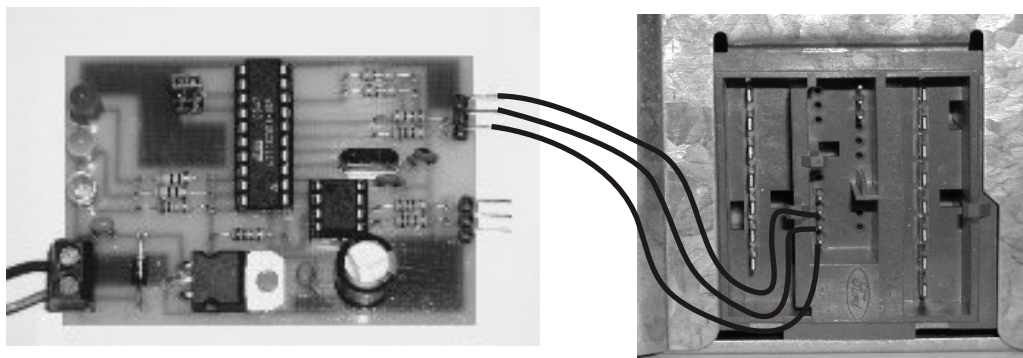


Figure 3

FORD5000,6000,7000 (1996-1998) :

- Set Jumper to Jp2 Ford5000, 6000 position (see Figure 1-2)
- Connect the E-13 to car radio according with Figure 4
- Switch ON the power to car radio
- When you should see a message "LOCKED 10" or "LOCKED 13" Turn ON the power E-13 tool. As soon as the process is completed, the radio will respond and displaying "CODE" message indicating that the security code number can now be entered.
- Switch OFF the power of car radio.
- Disconnect the E-13 interface wires from car radio.
- Switch ON the power to car radio again and enter the code number.

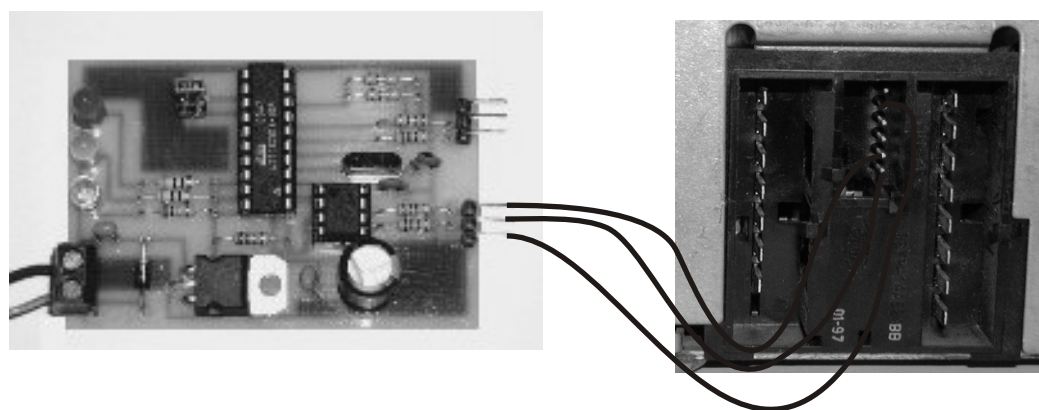


Figure 4

FORD5000,6000,7000 (1998-2001) :

- Set Jumper to Jp2 Ford5000, 6000 position (see Figure 1-2)
- Connect the E-13 to car radio according with Figure 5
- Switch ON the power to car radio
- When you should see a message "LOCKED 10" or "LOCKED 13" Turn ON the power E-13 tool. As soon as the process is completed,



the radio will respond and displaying "CODE" message indicating that the security code number can now be entered.

- Switch OFF the power of car radio.

- Disconnect the E-13 interface wires from car radio.

- Switch ON the power to car radio again and enter the code number.

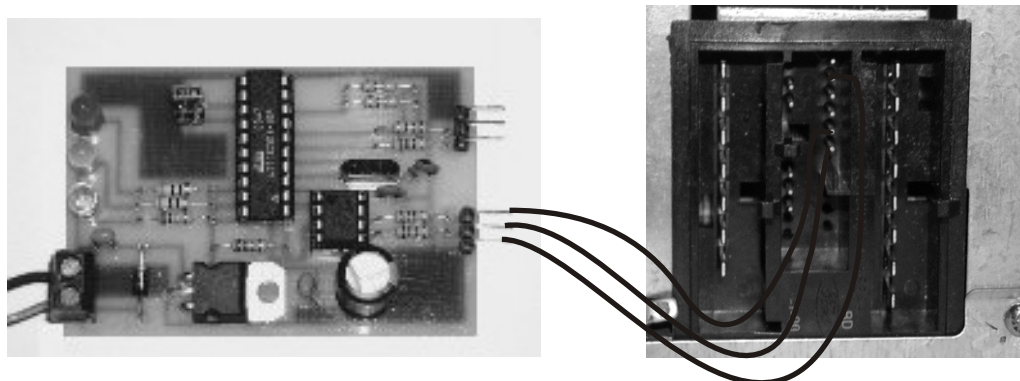
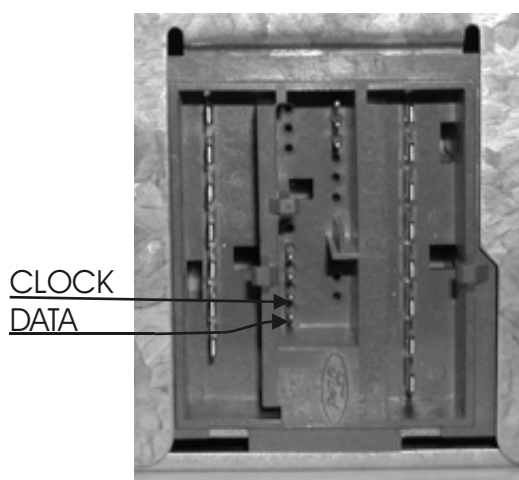
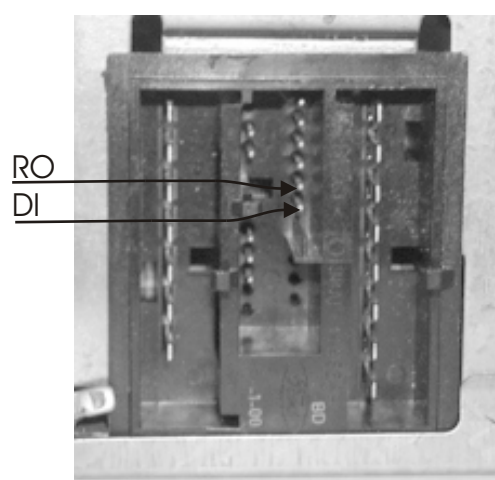


Figure 5

APPENDIX



FORD3000,4000



FORD5000,6000,7000

[Http://www.etlweb.com](http://www.etlweb.com)

Warranty Statement: ETL warrants that Product delivered shall conform to applicable. Report any defects for a 45 days period, from the applicable data on invoice. Products with are "samples", "prototypes" and "AS-IS" without warranty.

-ETL 2002-